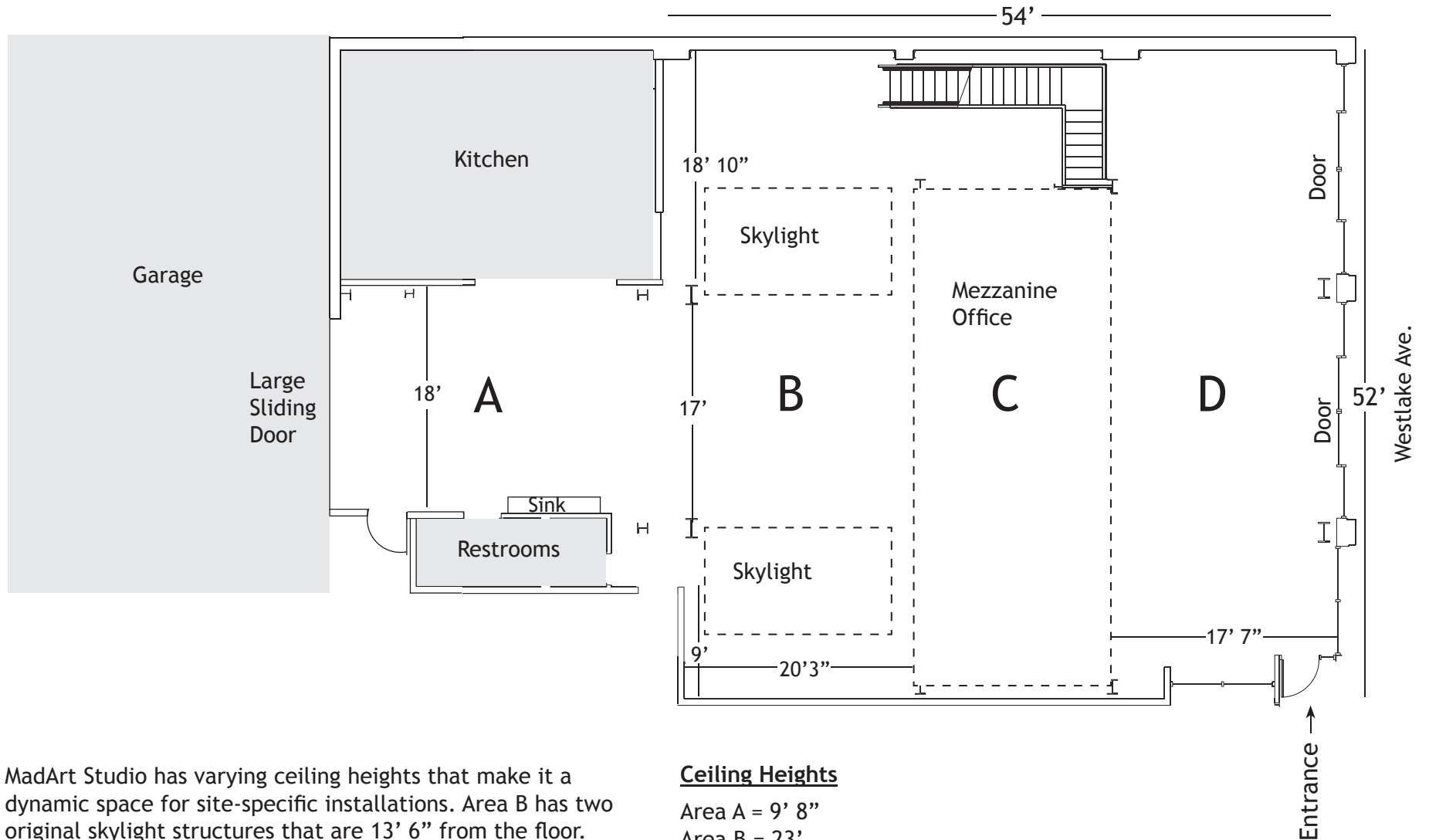


MadArt Studio ceiling heights with key measurements

Total Available Exhibition Space = 3,275' sq ft



MadArt Studio has varying ceiling heights that make it a dynamic space for site-specific installations. Area B has two original skylight structures that are 13' 6" from the floor. Area C has a lowered ceiling with an office above. In Area D the ceiling slopes up from the front of the building towards the back. The garage has alley access for loading materials.

Ceiling Heights

- Area A = 9' 8"
- Area B = 23'
- Skylights = 13' 6"
- Area C = 11' 4"
- Area D = 15' to 23'